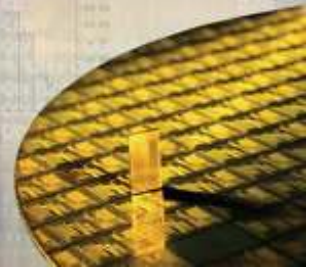




Press Release



FOR IMMEDIATE RELEASE

Media Contacts:

[Andrea Roberts](#), Technical Media
AR Marketing, Inc, (858) 451-8666
[Valerie Chereskin](#), Business Media
Chereskin Communications, (760) 942-3116

SYNTRICITY dataCONDUCTOR EP 5.0 SOFTWARE SELECTED BY LUMILEDS FOR SEMICONDUCTOR ENTERPRISE YIELD MANAGEMENT

SAN DIEGO, CALIFORNIA, OCTOBER 5, 2005 – Syntricity Inc. announced that Lumileds Lighting has signed a multi-million dollar three-year contract for Syntricity's dataConductorEP™ 5.0. Lumileds, San Jose, California, the largest supplier of high-power light emitting diodes (LEDs), plans to integrate dataConductorEP as a key element of the systems it uses to manage its manufacturing operations. dataConductorEP is an interactive enterprise yield management (EYM) software suite that allows semiconductor manufacturers to collect data from diverse manufacturing systems and combine them into a single warehouse to manage yields during characterization, yield ramp and volume production.

The contract includes analytic tools, Advanced Monitoring for Production (AMP™), statistical process control (SPC) capability and hosted services. Recently announced, Syntricity's AMP offering enables executives and managers to access summary report cards of production yields and drill down into specific wafer acceptance test, wafer sort and final test information. It allows engineers to identify problem areas in production-released product and easily navigate to device characterization analysis tools for detailed root cause analysis.

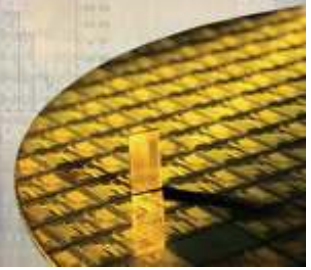
"dataConductorEP enables us to organize all our data into one common database for richer data analysis," said Terrie Brown, IT manager for Lumileds. "Its web-based architecture provides a unified database and central warehouse that can easily be accessed by our manufacturing facilities around the world. Syntricity's hosted offering allows Lumileds to rapidly take advantage of the software, while reducing our cost of ownership and administration.

"It is important for our engineers, their managers and Lumileds executives to have the most up-to-date tools to do their jobs effectively and efficiently," said Neil Bostock, Lumileds' CFO. "dataConductorEP helps us improve supply chain visibility, increase traceability of parts, obtain earlier indications of process and yield variances and quickly access all available data as it's produced."

"Lumileds defined stringent requirements and expectations for their yield management system and their vendor relationship," said Alan Deeter, Senior VP of sales and marketing for Syntricity. "We are extremely pleased to have been selected by Lumileds as their enterprise yield management solution provider."



Press Release



About Lumileds Lighting

Lumileds Lighting is the world's leading manufacturer of high-power LEDs and a pioneer in the use of solid-state lighting solutions for everyday purposes including automotive lighting, camera flash, LCD displays and televisions, portable lighting, projection and general lighting. The company's patented LUXEON® Power Light Sources are the first to combine the brightness of conventional lighting with the small footprint, long life and other advantages of LEDs. Lumileds also supplies core LED material and LED packaging, and manufactures billions of LEDs annually. The company is headquartered in San Jose, California, with operations in the Netherlands, Japan and Malaysia and sales offices throughout the world. For more information, call Lumileds at 408-435-6111 or visit www.lumileds.com.

About Syntricity, Inc.

Syntricity is the pioneer in enterprise yield management. Its yield management software is used by leading semiconductor companies, test vendors and wafer foundries to gather, manage and analyze data from facilities around the world to improve yield, reduce product development cycles, and increase profits. A privately-held company, Syntricity is headquartered in San Diego, California.

For more information, contact Syntricity Inc., 6020 Cornerstone Court West, San Diego, California 92121; Tel: (858) 552-4485; Fax: (858) 552-4493. Or visit <http://www.syntricity.com>.