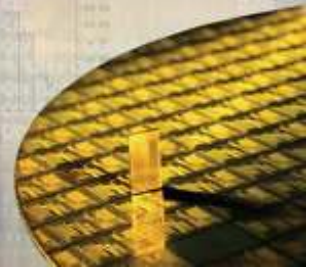




Press Release



FOR IMMEDIATE RELEASE

SYNTRICITY INTRODUCES AMP™— ADVANCED MONITORING FOR PRODUCTION APPLICATIONS POWERED BY dataConductorEP

New AMP Applications Present User with Ready Access to Data and Information for WAT, Wafer Sort and Final Test — To be demonstrated at FSA Suppliers Expo, Booth 322, San Jose Convention Center, October 6, 2004

[Click here to download AMP Product Brief.](#)

SAN DIEGO, CALIFORNIA, Sept 27, 2004 — Syntricity Inc. today introduced AMP™— *Advanced Monitoring for Production* applications, the first of a series of new applications to harness the Dynamic Reporting Module introduced on the dataConductorEP® yield management platform. Dynamic Reporting supports unattended automation and encapsulation of best practices accessible over the Internet in all dataConductorEP installations.

dataConductorEP's AMP applications provide ready access to data and information for WAT, Wafer Sort and Final Test operations. Summaries are combined in single-page views and can be accessed with the click of a mouse. Analysis and viewing options have been optimized to capture industry best-practice knowledge to simplify and enhance the yield monitoring process.

"By understanding complex, cross-operation relationships between parametric and bin data, you turn your data into forward-looking information that can prevent the next major yield loss or the next shortage of the highest speed grade," commented Syntricity VP of Sales and Marketing, Alan Deeter. "These applications allow for real-time sharing of information and knowledge throughout the entire enterprise—from engineering to operations and design." Deeter added.

dataConductorEP is the leading engineering data management, analysis and reporting platform that addresses device introduction, yield ramp and yield management and supports the communications and collaboration necessary to streamline business decisions around semiconductor engineering information.

AMP Applications Overview

dataConductorEP's AMP applications provide broad, high-level overviews as well as individual, detailed results of WAT, wafer sort, and final test. The Dynamic Reporting and Genealogy software modules within the dataConductorEP platform power the applications.

Dynamic reporting provides the user with an up-to-the-second snapshot of the data warehouse, providing linked results that represent yield and/or parametric information. It allows for drill-down, drill-up, and drill-through of the data, as well as user level sorting and organization of the underlying data and views. The views are organized to capture the best practices for production monitoring.



Press Release

Further views provide failure mode analysis by determining the failure signature of rogue material, or material deviations from target values. The Genealogy module provides users with material traceability across operations to allow relational analysis when identifying failure modes.

Sample of AMP Applications Features and Benefits:

- Analysis templates make it easy to set up specific parameters.
- Dynamic views of the warehouse mean that the same up-to-the-minute information and best practice knowledge is disseminated to the enterprise.
- Multiple plots per page provide many views of the data at once.
- Quick identification of rogue material provides better inventory control and limits risk.

AMP Applications will be demonstrated at the FSA Suppliers Expo, Booth 322 in Exhibit Hall 3 of the San Jose Convention Center on October 6, 2004.

Syntricity Inc. has been widely recognized for the development of its groundbreaking yield management platform. Reed Business Information, who also named Syntricity as one of the top 50 electronics companies to watch in 2004, named CEO Jeff Teza a 2003 Innovator of the Year. In April, the company received the 2004 Application of the Year Award from The Tech Sector; San Diego's high technology publication.

About Syntricity

Syntricity Inc. provides enterprise-wide, Web-native software and services for semiconductor yield improvement. A privately held company, some of Syntricity's key customers include Broadcom, Chartered Semiconductor, Cirrus Logic, Freescale (formerly Motorola's SPS division) Legerity, Lexmark, Marvell, Qualcomm, Silicon Labs, and Tundra. Syntricity is headquartered in San Diego, California, and maintains sales offices in Newport Beach, California; San Jose, California; Singapore and Taiwan. For more information, contact Syntricity Inc., 6020 Cornerstone Court West, San Diego, California 92121; Tel: (858) 552-4485; Fax: (858) 552-4493. Or visit <http://www.syntricity.com>.